

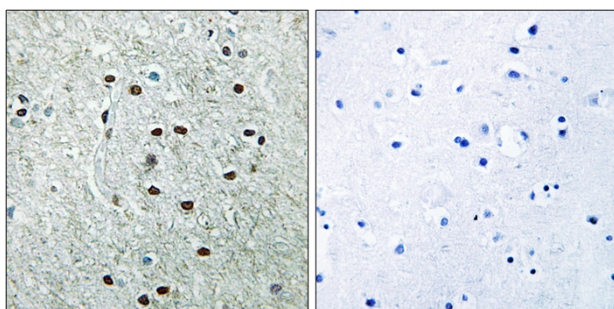


REXO1 Polyclonal Antibody

Catalog No	YP-Ab-01977
Isotype	IgG
Reactivity	Human;Rat;Mouse;
Applications	IHC;IF;ELISA
Gene Name	REXO1
Protein Name	RNA exonuclease 1 homolog
Immunogen	The antiserum was produced against synthesized peptide derived from human REXO1. AA range:185-234
Specificity	REXO1 Polyclonal Antibody detects endogenous levels of REXO1 protein.
Formulation	Liquid in PBS containing 50% glycerol, 0.5% BSA and 0.02% sodium azide.
Source	Polyclonal, Rabbit,IgG
Purification	The antibody was affinity-purified from rabbit antiserum by affinity-chromatography using epitope-specific immunogen.
Dilution	IHC: 1/100 - 1/300. ELISA: 1/20000.. IF 1:50-200
Concentration	1 mg/ml
Purity	≥90%
Storage Stability	-20°C/1 year
Synonyms	REXO1; ELOABP1; KIAA1138; TCEB3BP1; RNA exonuclease 1 homolog; Elongin-A-binding protein 1; EloA-BP1; Transcription elongation factor B polypeptide 3-binding protein 1
Observed Band	
Cell Pathway	Nucleus .
Tissue Specificity	Ubiquitously expressed.
Function	function:Seems to have no detectable effect on transcription elongation in vitro.,similarity:Belongs to the REXO1/REXO3 family.,similarity:Contains 1 exonuclease domain.,subunit:Interacts with TCEA2 and TCEB3.,tissue specificity:Ubiquitously expressed.,
Background	function:Seems to have no detectable effect on transcription elongation in vitro.,similarity:Belongs to the REXO1/REXO3 family.,similarity:Contains 1 exonuclease domain.,subunit:Interacts with TCEA2 and TCEB3.,tissue specificity:Ubiquitously expressed.,
matters needing attention	Avoid repeated freezing and thawing!

Usage suggestions

This product can be used in immunological reaction related experiments. For more information, please consult technical personnel.

Products Images

Immunohistochemistry analysis of paraffin-embedded human brain, using REXO1 Antibody. The picture on the right is blocked with the synthesized peptide.